

DOI: <https://doi.org/10.38027/ICCAUA2025EN0165>

Effect of Vernacular Architecture on Human Well-being: Analysis of Selected Case of Bellapais Monastery

* ¹ Ash Sarıdaş, ² Assist. Prof. Dr. Mustafa Eyyamođlu

¹ & ² Department of ARCHITECTURE, Faculty of ARCHITECTURE and ENGINEERING, BAHCESEHIR CYPRUS University, North Cyprus

¹ E-mail: asaridas@baucyprus.edu.tr, ² E-mail: mustafa.eyyamoglu@baucyprus.edu.tr

Abstract

Received: 11 January 2025
Revised: 28 May 2025
Accepted: 18 June 2025
Available online: 5 July 2025

Copyright © 2025 by the author(s).

All rights reserved.

This article is published under an open-access model and is made available in accordance with the terms of the Creative Commons Attribution 4.0 International Licence (CC BY).



The publisher maintains a neutral stance concerning jurisdictional claims in published maps and institutional affiliations.

This article has been selected and peer-reviewed for publication in this journal as part of the 8th International Conference of Contemporary Affairs in Architecture and Urbanism, held on 8–9 May 2025 in Alanya, Türkiye.

Vernacular architecture is a cultural asset that reflects the identity, life culture and history of a society. In this context, sustainable protection of vernacular architecture within the scope of cultural heritage is important. The concept of well-being, which exists within the scope of the United Nations sustainable development goals, expresses the state of being physically, mentally and emotionally healthy for individuals. At this point, architecture offers spaces that satisfy individuals and allow them to be happy. Therefore, architecture is associated with well-being. It is directly related to vernacular architecture, which is a synthesis of adaptation to climate, use of natural and local materials and cultural reflections. Bellapais village was selected for this study, which provides peace and aesthetic satisfaction to its residents and visitors with its stone houses, narrow streets and design compatible with the natural environment, local identity and cultural belonging. Another important feature of the study area is the existence of the Bellapais Monastery, which is an important cultural heritage of Cyprus. Depending on the purpose of the study, the relationship between vernacular architecture/cultural heritage and well-being is evaluated in line with the perceptions of users and visitors.

Keywords: Vernacular, Cultural heritage, well-being, Sustainability, Bellapais.

1. Introduction

The increasing population density in the world has pushed most people to live in urban areas. With the increasing population, dense urbanization and high-rise construction are rapidly increasing. In this context, increasing population density and rapid construction have alienated people from the natural environment and negatively affected people's well-being (Evans, 2003). As a result of this adverse effect, various psychological and environmental problems have emerged (Dalgard & Tambs, 1997). The emergence of these problems has further increased the importance of structures built with local materials and having an architectural identity. At the same time, rapid urbanization, which negatively affects people's well-being, has encouraged individuals to spend more time in historical areas, and the time spent in these areas has strengthened people's sense of belonging. This situation has brought the issue of re-functioning and restoring local architectural examples to the agenda (Chan et al., 2024).

The United Kingdom Sustainable Development Strategy defines well-being as physical, mental, and social optimism. In this context, well-being does not only mean the absence of pain, discomfort, or inadequacy. Different conditions that affect the individual's general happiness and quality of life can support people's well-being (Defra, 2008). These conditions include strong and inclusive communities, good health, healthy and impressive environments, and supportive personal relationships (World Health Organization, n.d.). Areas where individuals feel important and valued are in solidarity and where strong social ties protect physical and mental health; spacious, natural, and attractive environments contribute to well-being by supporting individuals' physical and mental health (Defra, 2008). Therefore, well-being is of great importance in terms of biophilic design and sustainable development goals.

On the other hand, the World Health Organization defines health not as the absence of poor health but as "a state of complete physical, mental, and social well-being" (Thaler & Sunstein, 2008). Today, depression, stress, anxiety, obsessive-compulsive disorders, and phobias are on the rise among individuals (DergiPark, n.d.). However, emotional well-being is not limited to the presence or absence of these common mental health problems; it also includes the individual's quality of life and level of happiness (Ryan & Deci, 2001).

Bellapais Monastery, a historical local structure in the Bellapais region of Kyrenia, Northern Cyprus, has been restored within the scope of protection and opened to users (Kıbrıs Cyprus, n.d.). It is a cultural heritage preferred by many visitors in terms of tourism. The answer to whether the Bellapais Monastery was built with well-being criteria in mind

or whether these criteria were never considered is quite open-ended and has not been investigated by anyone. However, Bellapais Monastery has become an entirely symbolic meeting point today. The study analyzed the criteria for the monastery to be flooded with so many local and foreign visitors and sought answers to the questions. At the same time, although there are many cultural heritages similar to Bellapais in Northern Cyprus, the study analyzes and includes why Bellapais and its surroundings are flooded with so many visitors compared to other places. Bellapais Monastery, as a cultural heritage, is a living space that should be valued in terms of human well-being. This structure, built with local materials such as natural stone, also exemplifies biophilic design strategies, creating areas where users can find peace regarding social and spiritual health while also creating non-toxic, sustainable, and environmentally friendly spaces in terms of physical health. The monastery, which is compatible with its surroundings, is aesthetically appealing to the eye and creates an instant sense of positive energy and happiness in people; it also attracts the attention of users in terms of biophilic design strategies.

The arches and stone carvings made with fine artistry reflecting the period's architecture are among the monastery's first striking details. At the same time, elegant columns and magnificent arches reflecting the period's architecture invite us to the monastery's interior. High windows create a spacious atmosphere by allowing natural light to reflect in its most beautiful and pure form. The interior, illuminated with sufficient natural light, offers the user a quality interior experience (Devyap Cyprus, n.d.). Just like great works of literature, poems, or music, significant structures can tell the story of the human soul (Daniel Libeskind). Although architects can consciously apply well-being or biophilic design criteria in newly constructed buildings, adapting these criteria to cultural heritage buildings is more limited and complex. Therefore, due to the scarcity of buildings that combine cultural heritage and well-being parameters, it is essential to give more importance to such spaces to make them sustainable by protecting them and conducting more studies and research in this area.

In the study, the environmentally compatible biophilic design strategies of Bellapais Monastery, one of the important cultural heritage structures of Northern Cyprus and a historical local structure located in the Bellapais region of Kyrenia, and the effects of this design on human well-being together with the well-being criteria were examined according to the analysis and survey results and analyzed as a case study.

In this context, in the first part of the study, a detailed literature review was conducted, and the well-being criteria, the well-being created by historical structures when they are together with nature, and the well-being effects of biophilic design were investigated and analyzed in detail. In the second part of the study, the necessary analyses were conducted on the Bellapais Monastery, a case study and the connection between the case study and well-being parameters was examined. In the other parts, the survey findings were considered, the evaluations were made in line with the obtained data, and the results were discussed.

2. Literature Review

2.1 Human Well-Being

Today, the World Health Organization defines health not as the absence of ill health but as "a state of complete physical, mental, and social well-being" (Thaler & Sunstein, 2008). Health is no longer just a matter of access to medical treatment but is determined by numerous factors related to the quality of our built environment (Steeners, 2021). Well-being is associated with a person's level of stress, level of happiness, and the efficiency they derive from life. Well-being is usually examined under two headings: hedonic well-being and eudaimonic well-being. Hedonic well-being focuses on momentary emotional states. This includes the efficiency they derive from life and the fleeting happiness, pleasure, and satisfaction they derive from it (Ryan & Deci, 2001). Large and sufficiently lit spaces, natural materials used in local buildings and designs compatible with the environment create immediate positive energy and happiness in the person.

On the other hand, eudaimonic happiness involves finding joy in a permanent and sustainable lifestyle by attributing deeper meanings rather than momentary pleasure and efficiency (Ryan & Deci, 2001). Accordingly, local buildings support the deep meanings and sense of belonging they create in the person with their natural materials and environmentally friendly designs, while allowing individuals to establish a meaningful connection with the environment. Buildings that are part of cultural heritage strengthen the user's sense of identity and belonging (Chan, Lee, Tang, & Chen, 2024).



Figure 1. Six Criteria Of Human Well-being.

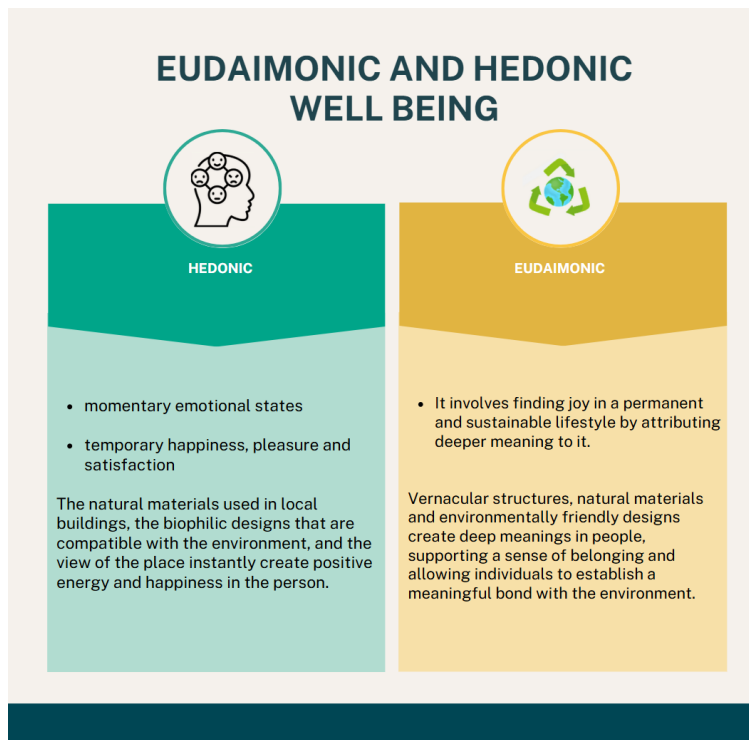


Figure 2. Eudaimonic and Hedonic Well-being.

The relationship between architecture and health has received little attention and research throughout history, apart from the importance given to the design criteria of healthy buildings (Steemers, 2021). However, in recent years, many studies have examined the relationship between architecture and health, and this issue has been approached from a more holistic perspective. Examples of these studies include the analyses published by the Royal Institute of Architects (RIBA, 2013) and the Commission on Architecture and the Built Environment (CABE, 2009). The analyses are supported by increasing medical research on physical health (NICE, 2008) and mental health (Dalgard & Tambs, 1997). The points highlighted in the studies are generally related to unhealthy situations caused by environmental features such as dense human population, air quality, noise, and light (Evans, 2003). The studies generally focus on the definition and research of wellness rather than unhealthiness and behaviors that support a developing society.

2.2 Biophilic Architecture/Sustainable Development Goals

Biophilic design is an essential approach to human well-being and sustainable architecture. It emphasizes integrating natural elements with the built environment to increase ecological sustainability (Zhong, Schröder, & Bekkering, 2022). Biophilic design effectively increases ecological sustainability and creates psychologically satisfying spaces for people, increasing human comfort and satisfaction (Andreucci, Loder, Brown, & Brajković, 2021). Today, people spend approximately 90% of their time indoors (Ryan, 2015). In this context, biophilic design is essential not only for the external environment but also for the quality of the interior. Integrating the interior with

natural components is also very effective in the well-being of people (13-14). While green architecture emphasizes energy efficiency and material sustainability or aims to make buildings suitable for climatic conditions, biophilic architecture focuses on the holistic integration of sustainable elements (Kaplan & Kaplan, 1989). In this context, the fact that biophilic design focuses on environmental sustainability and human well-being from a holistic perspective distinguishes biophilic architecture from other sustainable design approaches. For example, while green architecture is based on measurable environmental results such as CO2 emission reduction, biophilic architecture addresses integrating the built environment with natural elements to increase people's psychological comfort and positively affect their well-being (Grinde & Patil, 2009). The positive effects of people's contact with nature on improved health and well-being have been documented. When integrating biophilic design with the built environment, attention should be paid to elements such as natural light, ventilation, local natural materials, and the adequacy of green areas. Biophilic design is essential not only for people's well-being but also for environmental sustainability. In this context, biophilic design approaches the integration of the interior and exterior environment with the built environment with natural light, green areas, and natural ventilation elements from a holistic perspective, harmonizing them and filling the gaps. This integration improves the users' well-being and overall quality of life (Dalay & Aytac, 2022).

As a result, biophilic design not only meets and addresses sustainability needs but also increases people's comfort by establishing a strong bond with nature and positively affects their well-being. At the same time, from a holistic perspective, it is an important design concept for both the present and the future of sustainable architecture, as it meets both the ecological needs of the built environment and the needs of the user.

2.3 Vernacular Architecture and Connection with Nature Sustainability

Biophilic design is a crucial design strategy in an increasingly structured world. The positive effects of nature on the human spirit and well-being have caused people to yearn for and turn to nature more. Combining biophilic design strategies with vernacular architecture provides a living environment that is in harmony with nature and positively impacts human well-being. Local building materials such as natural stone used in vernacular architecture create a strong connection with nature, preserve cultural heritage, and create sustainable, environmentally friendly structures. When these two approaches are examined together, living spaces and places where individuals can socialize can be made while positively supporting the well-being of individuals. Therefore, biophilic design and vernacular architecture offer a holistic perspective that aims to increase the quality of life of individuals while supporting sustainability. As an enduring built form, vernacular architecture and settlements profoundly connect with the natural environment and other forms of life (Knapp, 1992).

3. Material and Methods

Since the materials and methods used are within the extend of the study, a literature review was conducted, and the literature on the biophilic parameters and the relationship and interaction of historical structures was examined. Accordingly, the current situation analysis was carried out in the case study. In parallel, questions were directed to the local people and users of the region, and a survey study was conducted. Discussion and conclusion were reached according to the survey results and the findings obtained in the analysis. These stages constitute the methodology of the study (fig3). The research case study is the Bellapais Monastery in the Bellapais region of Kyrenia, which was analyzed in terms of biophilic design and its effects on the well-being of the users. The literature examines and analyzes the effects of local architecture on human well-being and biophilic design on sustainable development goals. The survey method was also used to analyze and explore the effects of the selected case study, the Bellapais Monastery, on human well-being. Primary data were collected through a survey distributed online. This study adopted a convenience sampling approach to select people who were easy to reach as it offered a more cost-effective and practical way to collect primary data. The Bellapais region was selected as the survey area in the research. The aim is to examine whether the well-being criteria of the users visiting the monastery are directly met by the biophilic design that provides integrity with the environment, unique sea and mountain views, natural light, and natural ventilation. It provides valuable data to understand how the historical and magnificent structure of Bellapais Monastery affects the well-being criteria determined by its users.

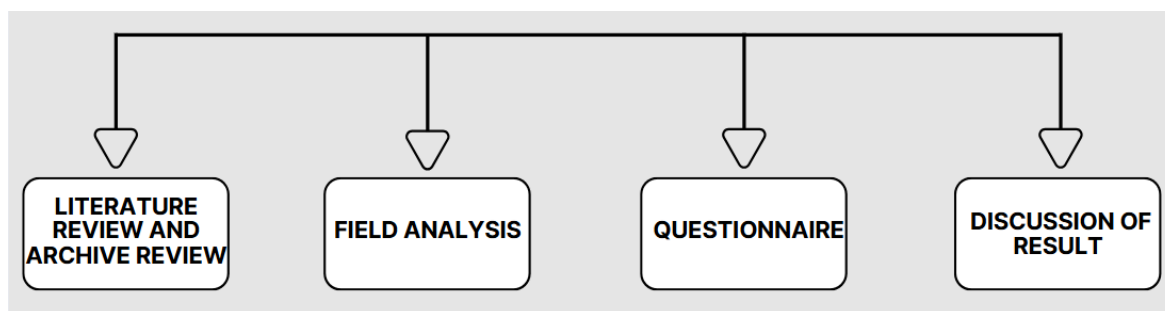


Figure 3. Conceptual Approach of the Research.

4. Analysis Of Selected Case Study

4.1 Historical and Cultural Background of the Bellapais Monastery

Bellapais Monastery, which has hosted many different civilizations over the years, is in the village of Beylerbeyi, a settlement area 5 kilometers from the center of Kyrenia on the northern slopes of the Besparmak Mountains. The structure, which has a magnificent view and can be seen from everywhere in Kyrenia, is one of the examples of Gothic architecture in Northern Cyprus. The structure was built between 1189 and 1489 and was founded by Aimery de Lusignan. The current state of the structure was built between 1267 and 1284 during the reign of King Hugh III. King Hugh IV built the courtyard and refectory of the structure between 1324 and 1359. King Hugh IV used the monastery as a living space and had apartments built. The monastery, under Ottoman rule between 1571 and 1878, was entrusted to the Greek Orthodox Church and was used by the Orthodox until 1974. During British rule between 1878 and 1960, the refectory section of the monastery was covered with concrete and used as a hospital by the British army. For this reason, there are still bullet holes in the walls of the dining hall due to the soldier's using weapons in this area. The monastery and its surroundings are part of the Turkish Republic of Northern Cyprus after the Cyprus coup 1974. The most solid structure of the monastery and its surroundings, which are popular today, is the church part, and there is a restaurant, cafe, and seating area within the monastery's borders. The monastery attracts much attention from both locals and tourists with its magnificent view, environmentally friendly biophilic design, and part of the cultural heritage.

4.2 Analysis of Existing Biophilic Design Strategies And Effects of Building on Human Well-being

Bellapais Monastery, one of Northern Cyprus's most beautiful Gothic architecture, was built on a natural rock. When examining the monastery, the first essential details that catch the eye are the arches and stone carvings that reflect the period's architecture. The natural stones utilized in the construction were expertly sourced from local suppliers in Cyprus, ensuring quality and supporting the community. Local stones were shaped by the masters of the period and brought together with detailed artistry. The interior of the monastery consists of elegant columns and arches. The high windows provide natural light to the interior and create spacious areas for the users. The church, the most striking part of the monastery, attracts attention with its high ceiling supported by wide arches. The vast and sufficiently lit areas with natural light, the natural materials used in the monastery, and the thin and elegant columns and arches that reflect the spirit of the period allow visitors to take a journey through time while supporting the deep meanings and sense of belonging they create in the person and allowing individuals to establish a meaningful connection with the environment. The monastery, a part of the cultural heritage, also strengthens the user's identity and sense of belonging. At the same time, the biophilic design of the monastery, which is compatible with the environment, appeals to the eye in terms of aesthetics and creates instant positive energy and happiness in the person.

5. Findings

5.1 Observation And Case Analysis







Human Well-being, Biophilic Architecture/Sustainable Development Goals, Vernacular Architecture, and Sustainability of Connection with Nature, presented in the literature section of the study, were accepted as the analysis parameters of this study. In this context, Bellapais Monastery, selected as a case study, was examined in line with these headings, including well-being parameters in architecture, and the following findings were compiled as shown in Table 1:

1. Within the scope of Human well-being, the Bellapais Monastery, which was selected as a case study, was examined and analyzed in line with the human well-being criteria found in architecture: They include physical, psychological/emotional, social, spiritual/intellectual, environmental, and financial well-being.
 - **Physical Well-being:** It was determined that the natural light, air quality, and thermal comfort in the monastery and its surroundings provided users a more spacious and brighter space experience while positively affecting their physical well-being. This shows us that the physical well-being criterion is present in the monastery.
 - **Psychological/Emotional Well-being:** The monastery's historical structure, biophilic design, magnificent sea view, user-created color and light, calm and safe environment, aesthetic satisfaction, and spatial quality have positive effects. In this case, the psychological/emotional well-being criterion is also present in the monastery.
 - **Social Well-being:** Cultural activities such as classical music, exhibitions where users can interact in the monastery, and social areas created by restaurants and cafes around the monastery are meeting points for users and support social ties between people. The social well-being criterion is also present in the monastery.
 - **Spiritual/Intellectual Well-being:** The sense of belonging and cultural experience created by the monastery's historical and symbolic structure positively affects the user's mind, creates awareness, and offers areas for introspection. This also supports the spiritual/intellectual well-being of the users.
 - **Environmental Well-Being:** The monastery has been observed to meet the environmental well-being criterion with its integrity in nature and biophilic design, easy access to green areas, and excellent mountain and sea views.

- **Financial Well-being:** The monastery contributes economically to the region through tourism; however, its direct financial benefit to the individual is limited. In this case, it has been observed that it is neutral regarding the financial well-being criterion.
2. When Biophilic Architecture/Sustainable Development Goals are examined in the literature, it has been determined that biophilic design effectively increases ecological sustainability and increases human comfort and satisfaction by creating psychologically satisfying spaces for people (Andreucci, Loder, Brown, & Brajković, 2021). At the same time, biophilic design is a fundamental approach to human well-being and sustainable architecture. It emphasizes integrating natural elements with the built environment to increase ecological sustainability (Zhong, Schröder, & Bekkering, 2022). In this context, when the Bellapais monastery was analyzed in line with this criterion, the following findings were reached;
- The monastery appeals to both the physical environment and the users by providing easy access to green areas with its built environment, natural light, ventilation, and local natural materials. Its biophilic design and strong integrity with nature also offer excellent mountain and sea views.
 - It has been observed that the monastery's historical building form establishes a strong connection with biophilic design, increases people's comfort, positively affects their well-being, and contributes to environmental sustainability.

In this context, the Bellapais monastery is an important historical structure of sustainable architecture. It meets the ecological needs of the environment and the user's needs. It provides integrity to the built environment of sustainable architecture since it meets both the environmental needs of the built environment and the user's needs.

Table 1. Evaluation of Well-Being Parameters in Bellapais Monastery.

Well Being Criteria	Availability Status	Description	Figures
Physical Well-being	Existing	The natural light, air quality, and thermal comfort in and around the monastery provide users with a more spacious and brighter space experience while positively affecting their physical well-being.	
Psychological/Emotional Well-being	Existing	The positive effects of the monastery's historical structure, its biophilic design, the magnificent sea view, the color, light, and calm and safe environment created by the user, as well as the positive effects of its aesthetic satisfaction and spatial quality, have been observed.	
Social Well-being	Existing	Cultural activities such as classical music, exhibitions held within the monastery where users can interact, and social areas created by restaurants and cafes around the monastery are meeting points for users and support social ties between people.	
Spiritual / Intellectual Well-being	Existing	The sense of belonging and cultural experience created by the monastery's historical and symbolic structure in the users directly affects their minds in a positive way, creates awareness in the user, and offers areas that allow for introspection.	
Environmental Well-being	Existing	The integrity of the monastery with nature and its accessibility to green areas with its biophilic design.	
Financial Well-being	Neutral	The monastery provides an economic contribution to the region from a touristic perspective; however, its direct financial benefit for the the individual is limited.	

5.2 Evaluations of The Interviews

The survey method was used to analyze and explore the effects of the selected case study, Bellapais Monastery, on human well-being. The Bellapais region was chosen as the survey area for the research. The purpose of choosing this region was to examine whether the well-being criteria of the users visiting the monastery were directly met by the biophilic design, unique sea and mountain views, natural light, and natural ventilation that ensured integration with the environment. As a result of the survey method, important findings were revealed regarding the well-being experiences of the users as a result of visiting the monastery. The survey questions, which were directed to 34 people, were answered by 17 male and 17 female participants. 24% of these participants live in Bellapais, 21% in Türkiye, 18% in Nicosia, 15% in Famagusta, 9% in Kyrenia, and 5% in other countries or cities in Cyprus. The age range of the participants was broad, ranging from 18-65 and over 65. As a result of the survey method, 55% of the participants stated that they visit Bellapais Monastery once a month or more and 33% every day. The reasons for visiting Bellapais Monastery were 29% to spend time in nature, 26% to use the cafe/restaurant in the monastery, and 21% as a common meeting point with friends (Figure 4). The most important factors that lead users to visit the monastery include the view, which 29% of the participants preferred, and the biophilic design, which 26% preferred (Figure 5). This shows us that visitors prefer this place because of its historical and cultural structure, the opportunity to spend time socially, and to have a different experience in touch with nature.

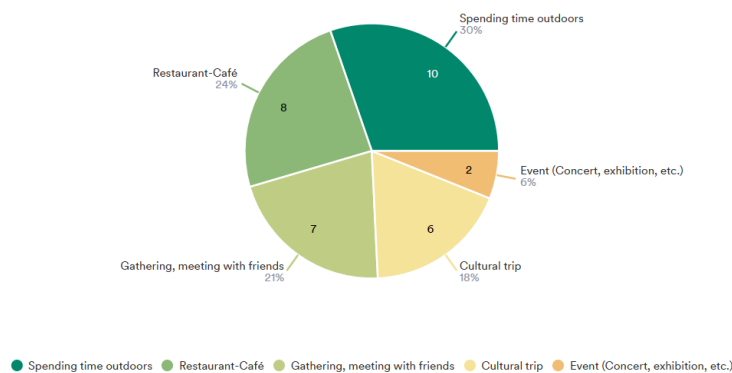


Figure 4. Result of Users Why There Selecting Case Study Area.

In the answers to the questions about the effects of Bellapais Monastery on human well-being, 62% of the participants stated that they experienced effects such as stress reduction and relaxation during their stay in the monastery. 11% of the participants believed that areas where natural and historical elements coexist improve physical health. At the same time, a significant % of participants, 59%, stated that the most important feature distinguishing Bellapais Monastery from other historical places is its impressive view and biophilic design with natural elements. In addition, 58% strongly agreed that the biophilic design features of Bellapais Monastery make them feel closer to nature. A large number, 42%, stated that the biophilic design of the monastery, which provides integrity with the environment, its unique view, and its historical atmosphere, creates positive effects such as reducing stress, positively affecting mood, and increasing energy levels. However, 3% of the participants gave neutral or negative answers to the questions about well-being criteria and stated that more importance should be given to the variety of activities and biophilic design around the monastery and that the environment should be improved and rearranged.

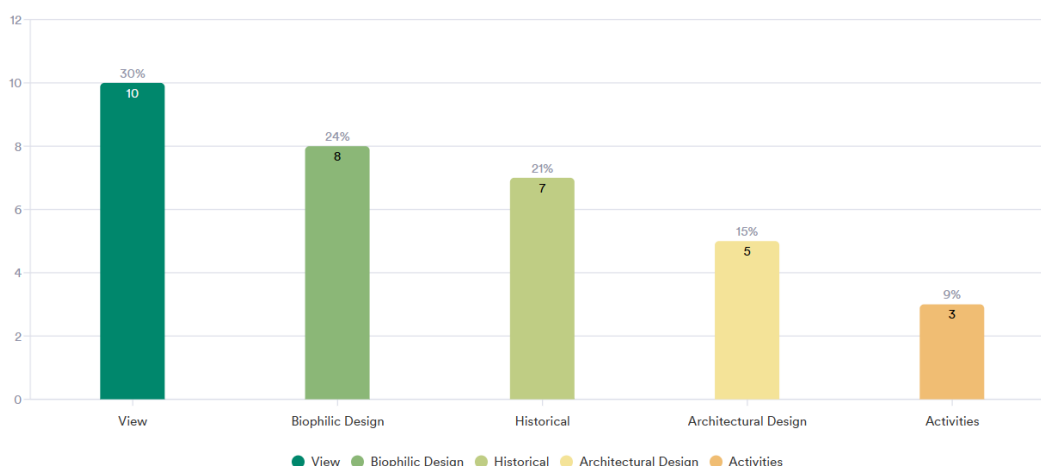


Figure 5. Result of the Factors That Motivate Users to Visit the Monastery.

Although it is observed that spaces, where natural and historical elements coexist, have positive effects on the well-being provided by the user, 12% of the survey participants have negative views about recommending Bellapais Monastery to their friends or family. This situation can be explained by the fact that spaces where natural and historical elements coexist and biophilic design are in the minority. For this reason, the monastery becomes crowded due to the influx of visitors. Elements such as silence and serenity can negatively affect individuals' experiences. The results show that people prefer spaces where natural and historical elements coexist and biophilic design. More attention should be paid to research, and arrangements should be made to create public spaces.

In conclusion, the interviews reveal that Bellapais Monastery is a part of the cultural heritage and a healing space for human well-being. When biophilic and vernacular architecture coexist, it contributes significantly to the user's well-being experience. This shows that these experiential values should be considered when conducting conservation and sustainability studies in spaces where these elements coexist.

6. Conclusions

In the study, the biophilic design of Bellapais Monastery and the effects of its atmosphere containing historical and natural elements on human well-being were evaluated and examined through literature, field research, and surveys. The survey section focused on the opinions of visitors who directly experienced the place. As a result of the analyses, it was revealed that integrating factors such as biophilic design, landscape containing natural elements, natural light and natural ventilation, and especially outdoor space with cultural heritage significantly contribute to stress reduction, relaxation, and human well-being. Most participants defined Bellapais Monastery as a historical and cultural area and a preferred place for social interaction. In this resting area, they can relieve the day's tiredness and become a meeting point. In addition to the historical value of Bellapais Monastery, an important example of cultural heritage, its panoramic mountain and sea view and existing features indirectly coincide with the biophilic design criteria. Therefore, the prominent reasons among the reasons for visitors to visit this situation connect the analyses of the positive effect of spatial experience on user well-being with biophilic design. In this context, it can contribute to improving users' mental health by focusing on the well-being of spaces where historical elements provide integrity to the natural environment. Moreover, the presence of biophilic principles further increases this mental health. Access to natural light, clean air, biophilic design, and historical space integrated with the physical environment were important issues in these survey results. According to the survey results, although positive feedback was received due to integrating historical elements with biophilic design and natural environment elements, some participants gave negative feedback due to the crowds caused by the influx of visitors to the monastery and its surroundings. In this context, the lack of elements such as silence and serenity in the monastery negatively affects the experiences of individuals. As a result of these findings, it is clear that the monastery is flooded with visitors due to the small number of historical spaces with biophilic designs where natural and historical elements coexist. The results show that visitors prefer biophilic designs of natural and historical elements and that these areas positively affect human well-being. Therefore, further research is needed on cultural heritage areas with biophilic design, where natural and historical elements are integrated, and these areas need to be redesigned to be open to the public. Within the scope of sustainable development, human well-being, which is an item determined, is directly related to biophilic design and cultural heritage. In line with the surveys and on-site examinations conducted within this scope, it is revealed that Bellapais Monastery is a unique example in the three areas in question. Therefore, the number of visitors to the region is constantly high. Moreover, the local people are worryingly disturbed by the crowd. Therefore, within the scope of protecting biophilic cultural heritage, the contribution of biophilic design-oriented spaces to human well-being is directly revealed. Moreover, the high number of visitors proves the scarcity of such spaces. When sustainable development, cooperation of local people, tourism, and contribution to the economy are selected as the focus, sample studies can be carried out on the slopes of the mountains dominating the Kyrenia region where such spaces can be increased. For example, in settlements such as Lapta, Karşıyaka, Karaoğlanoğlu, St Hilarion, and Karmi, it is possible to create many spaces where both cultural heritage is preserved and biophilic design principles are directly present. In this way, both cultural heritage is preserved, the participation of local people is ensured, and a contribution to human well-being can be made through biophilic design. It is a fact that this will serve sustainable development in general.

This study, in line with the topics discussed and the results obtained, has determined the positive aspects of spaces where cultural heritage is preserved and biophilic design is used in terms of human well-being. At the same time, the scarcity of these spaces has been revealed. Therefore, the study is important in revealing that more examples, projects, or applications are needed to offer such spaces to the public by preserving them with the same criteria and features.

References

- Africa, J., Heerwagen, J., Loftness, V., & Balagtas, C. R. (2019). Biophilic design and climate change: Performance parameters for health. *Frontiers in Built Environment*, 5, 28. <https://doi.org/10.3389/fbuil.2019.00028>
- Andreucci, M. B., Loder, A., Brown, M., & Brajković, J. (2021). Exploring challenges and opportunities of biophilic urban design: Evidence from research and experimentation. *Sustainability*, 13(4323). <https://doi.org/10.3390/su13084323>
- Amen, Mustafa Aziz. 2024. "AI-Driven Sustainable Habitat Design: Key Policy Frameworks and Ethical Safeguards." *Smart Design Policies* 1(1):23–32. doi:10.38027/SMART-V1N1-4.

- Babazadeh-Asbagh, N. (2024). Adaptive Reuse of Abandoned Churches in the Walled City of Famagusta, North Cyprus. *Journal of Mediterranean Cities*, 4(1), 130-156. https://doi.org/10.38027/mediterranean-cities_vol4no1_8
- Babazadeh-Asbagh, N. (2024). *Cultural Heritage Interpretation: Problems and Proposals for the Medieval Churches in the Walled City of Famagusta, Northern Cyprus*. Türkiye: Municipality of Alanya. E-ISBN: 978-625-99484-4-7. <http://dx.doi.org/10.2139/ssrn.5119840>
- Babazadeh-Asbagh, N. (2024). Interpretation Proposals for the Churches in the Walled City of Famagusta, North Cyprus. In Nia, H. A., & Rahbarianyazd, R. (Eds.), *Innovative Approaches to Cultural Heritage and Sustainable Urban Development: Integrating Tradition and Modernity*, (pp. 316-359) Cinius Yayınları. ISBN: 6256072936, 9786256072930. <http://dx.doi.org/10.2139/ssrn.5119766>
- Chan, S. H. G., Lee, W. H. H., Tang, B. M., & Chen, Z. (2024). Legacy of cultural heritage building revitalization: Place attachment and cultural identity. *Frontiers in Psychology*, 14, 1314223. <https://doi.org/10.3389/fpsyg.2023.1314223>
- Commission on Social Determinants of Health. (2008). *Closing the gap in a generation: Health equity through action on the social determinants of health* (Final Report). World Health Organization. https://iris.who.int/bitstream/handle/10665/43943/9789241563703_eng.pdf
- Dalgard, O. S., & Tambs, K. (1997). Urban environment and mental health: A longitudinal study. *The British Journal of Psychiatry*, 171(6), 530–536. <https://doi.org/10.1192/bjp.171.6.530>
- Daylight and Architecture. (n.d.). Architecture for well-being and health. Retrieved January 12, 2025, from <https://www.daylightandarchitecture.com/architecture-for-well-being-and-health/?consent=preferences,statistics,marketing&ref-original=https%3A%2F%2Fwww.google.com%2F>
- Department for Environment, Food and Rural Affairs (Defra). (2008). Sustainable development indicators in your pocket. Retrieved January 12, 2025, from <https://www.gov.uk/government/collections/sustainable-development-indicators>
- DergiPark. (n.d.). Retrieved January 12, 2025, from https://dergipark.org.tr/tr/download/article-file/2216251?utm_source
- Devyap Cyprus. (n.d.). *Bellapais Monastery: Cyprus' silent and elegant corner*. <https://www.devyapcyprus.com/bellapais-manastiri-kibrisin-sessiz-ve-zarif-kosesi/>
- Evans, G. W. (2003). The built environment and mental health. *Journal of Urban Health*, 80(4), 536–555. <https://doi.org/10.1093/jurban/jtg063>
- Grinde, B., & Patil, G. G. (2009). Biophilia: Does visual contact with nature impact on health and well-being *International Journal of Environmental Research and Public Health*, 6(9), 2332–2343. <https://doi.org/10.3390/ijerph6092332>
- Kellert, S. (2008). Dimensions, elements, and attributes of biophilic design. In S. Kellert, J. Heerwagen, & M. Mador (Eds.), *Biophilic design: The theory, science, and practice of bringing buildings to life* (pp. 3–19). Wiley. https://www.researchgate.net/publication/284608721_Dimensions_elements_and_attributes_of_biophilic_design
- Kellert, S. (2018). *Nature by design: The practice of biophilic design*. Yale University Press. https://books.google.com.cy/books?id=maNUdWAAQBAJ&printsec=frontcover&source=gbs_ViewAPI&hl=tr&redir_esc=y#v=onepage&q&f=false
- Kellert, S. R. (2012). *Building for life: Designing and understanding the human-nature connection*. Island Press. https://www.researchgate.net/publication/40777405_Building_for_Life_Designing_and_Understanding_the_Human-Nature_Connection
- Kellert, S. R., Heerwagen, J., & Mador, M. (2011). *Biophilic design: The theory, science, and practice of bringing buildings to life*. John Wiley & Sons. <https://www.wiley.com/enus/Biophilic+Design%3A+The+Theory%2C+Science+and+Practice+of+Bringing+Buildings+to+Life-p-9780470163344>
- Kellert, S., & Calabrese, E. (2015). *The practice of biophilic design* (Vol. 3). Terrapin Bright LLC. https://biophilicdesign.umn.edu/sites/biophilic-net-positive.umn.edu/files/2021-09/2015_Kellert%20_The_Practice_of_Biophilic_Design.pdf
- Kıbrıs Cyprus. (n.d.). Bellapais Manastiri'nin yapımı. Retrieved January 12, 2025, from <https://kibriscyprus.com/bellapais-manastirinin-yapimi/>
- Knapp, R. G. (1992). *Chinese landscapes: The village as place*. University of Hawaii Press. <https://doi.org/10.1017/S0305741000034433>
- Makram, A., & Abou Ouf, T. (2019). Biomimetic and biophilic design as an approach to innovative sustainable architectural design. In *Proceedings of the AR-UP 2019: Third International Conference of Architecture and Urban Planning* (pp. 24–26). Faculty of Engineering, Ain Shams University, Cairo, Egypt. https://www.researchgate.net/publication/336832615_Biomimetic_and_biophilic_design_as_an_approach_to_the_innovative_sustainable_architectural_design
- Portsmouth City Council. (2020). *Promoting and creating built or natural environments that encourage and support physical activity*. <https://www.portsmouth.gov.uk/wp-content/uploads/2020/05/development-and-planning-promoting-and-creating-built-or-natural-environments-that-encourage-and-support-physical-activity.pdf>

- Roberts-Hughes, R. (2013). City health check: How design can save lives and money. Royal Institute of British Architects (RIBA). <https://ecosystemsknowledge.net/sites/default/files/wp-content/uploads/2014/2/RIBA%20City%20Health%20Check-1.pdf>
- Ryan, C. O., Browning, W. D., Clancy, J. O., Andrews, S. L., & Kallianpurkar, N. B. (2014). Biophilic design patterns: Emerging nature-based parameters for health and well-being in the built environment. *ArchNet-IJAR: International Journal of Architectural Research*, 8(2), 62–76. <https://earthwise.education/wp-content/uploads/2019/10/Biophilicdesign-patterns.pdf>
- Ryan, R. M., & Deci, E. L. (2001). Intrinsic and extrinsic motivations: Classic definitions and new directions. *Annual Review of Psychology*, 52(1), 141–166. <https://doi.org/10.1146/annurev.psych.52.1.141>
- Stemers, K. (2021, May 7). Architecture for well-being and health. Daylight and Architecture. <https://www.daylightandarchitecture.com/architecture-for-well-being-and-health/>
- Thaler, R., & Sunstein, C. (2008). *Nudge: Improving decisions about health, wealth, and happiness*. Yale University Press. https://www.researchgate.net/publication/257178709_Nudge_Improving_Decisions_About_Health_Wealth_and_Happiness_RH_Thaler_CR_Sunstein_Yale_University_Press_New_Haven_2008_293_pp
- Wijesooriya, N., & Brambilla, A. (2020). Bridging biophilic design and environmentally sustainable design: A critical review. *Journal of Cleaner Production*, 283, 124591. <https://doi.org/10.1016/j.jclepro.2020.124591>
- World Health Organization. (n.d.). Promoting well-being. Retrieved January 12, 2025, from <https://www.who.int/activities/promoting-well-being>
- Zhong, W., Schröder, T., & Bekkering, J. (2022). Biophilic design in architecture and its contributions to health, well-being, and sustainability: A critical review. *Frontiers of Architectural Research*, 11(1), 114–141. <https://doi.org/10.1016/j.foar.2021.01.006>